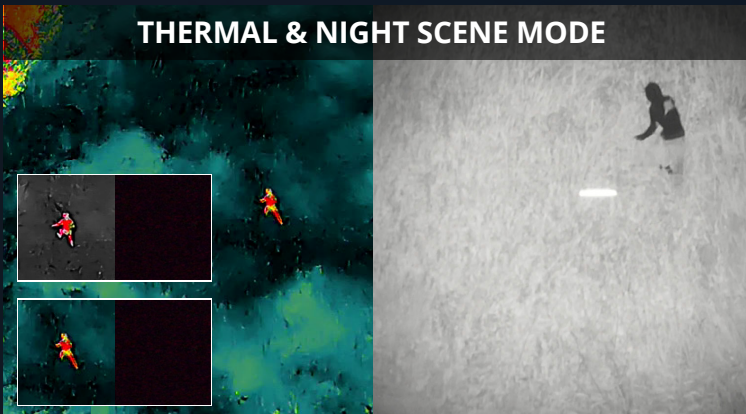




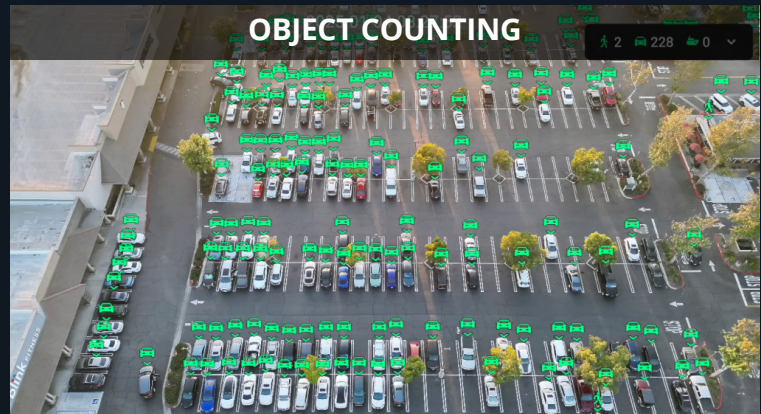
DJI MATRICE 4T

AI-Based Flagship Compact Drone for Security & Asset Inspection

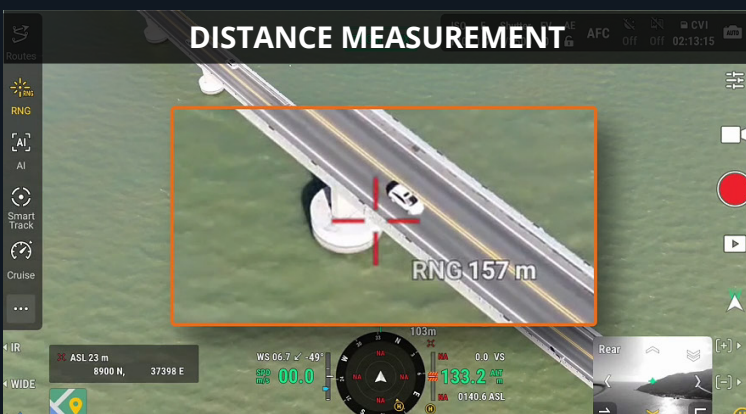
THERMAL & NIGHT SCENE MODE



OBJECT COUNTING



DISTANCE MEASUREMENT



FOREGROUND STABILIZATION





Matrice 4 Key Specs

- Fast Take Off: 15s
- Max Ascent Speed: 10 m/s *vs M3E 6 m/s **increased by 33%**
- Max Descent Speed: 8 m/s *vs M3E 6 m/s **increased by 33%**
- Max Forward Flight Speed: 21 m/s *vs M3E 15 m/s **increased by 40%**
- O4 Enterprise Transmission: 25 km (FCC) / 12 km (CE) ***increased by 66%**
- Max Forward Flight Time: Up to 49 min *vs M3E+RTK ***increased by 6 minutes**

Intelligent Operations With AI

- AI Detection: People, Vehicles, and Boat
Max. 128 objects (camera view), 1000 objects (single photo)
- Smart Track: Continuously track the selected object
- Distance Measurement with LRF: ASL & GPS Coordinates
- Point of Interest: Orbit around a selected pin point



Supports 3rd Party Models

Clear Vision with Multiple Sensors

Thermal Camera

640 x 512, f/1.0 53 mm equivalent focal length UHR Infrared Image, image resolutions up to 1280 x 1024

7x Tele Camera

1/1.5 CMOS, 48 MP Effective Pixels f/2.8, Format Equivalent: 168 mm pixels quantity increase by 4 times, zoom capability increase by 2 times

Laser Range Finder

Measurement Range: 1800 m
Range Accuracy: $0.2 + 0.005 \times D$ (m)

3x Medium Tele Camera

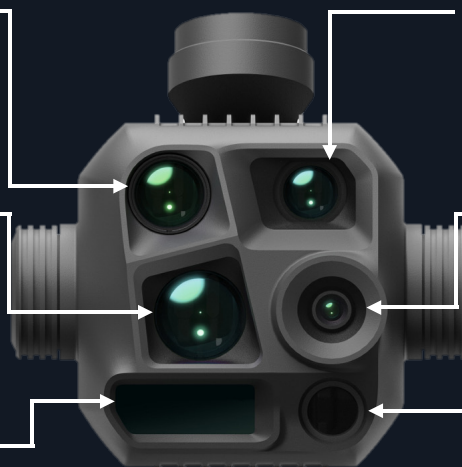
1/1.3 CMOS, 48 MP Effective Pixels f/2.8, Format Equivalent: 70 mm

Wide-Angle Camera

1/1.3 CMOS, 48 MP Effective Pixels f/1.7, Format Equivalent: 24 mm

NIR Auxiliary Light

FOV: 6°
Illumination Distance: 100 m | 328 ft



DJI MATRICE 4T